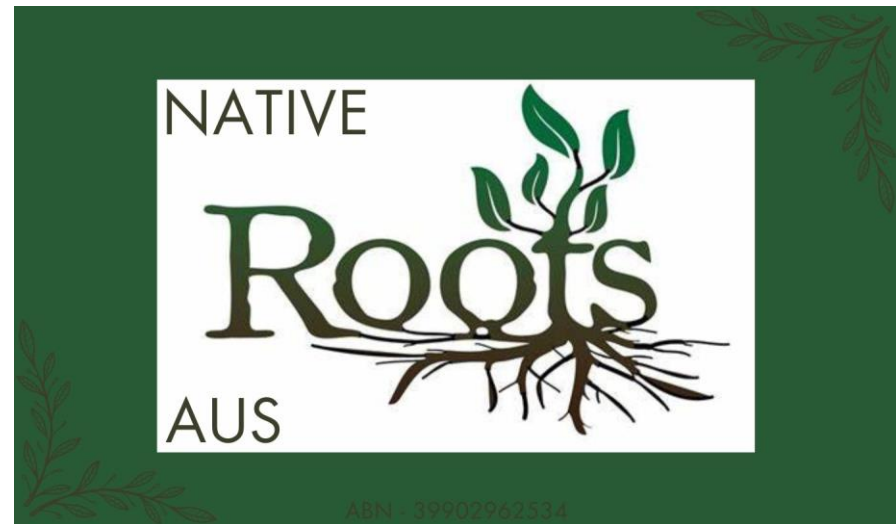




Native Roots Aus Capabilities Statement



About us

Established in 2024, Native Roots Aus brings together a handpicked team of seasoned construction professionals with decades of experience, ensuring extensive knowledge and expertise in every project. More than just a construction company, Native Roots Aus is founded on a deep commitment to community investment.

Our focus goes beyond construction. We're driven to make a positive impact on the future by tackling critical infrastructure projects with sustainability and community well-being in mind. By prioritising well-designed, sustainable practices, we aim to minimise our environmental footprint and ensure our projects leave a lasting positive legacy. This includes using recycled materials, implementing energy-efficient designs, and investing in renewable energy sources.

We believe in giving back to the communities we serve. This means supporting local businesses, creating training and employment opportunities, and fostering collaboration with residents throughout the project lifecycles. By building smart and giving back, we aim to create a ripple effect of positive change that strengthens communities for generations to come.

In addition, we are committed to working closely with First Nations peoples, respecting their deep connection to the land, and incorporating their knowledge and perspectives into our projects. We strive to build meaningful partnerships that honour cultural heritage and contribute to the social and economic empowerment of Indigenous communities.



Our Commitment to Your Success

We understand that a project's success relies heavily on having the right tools and the expertise to use them effectively. That's why we've invested in a comprehensive fleet of cutting-edge, GPS-equipped machinery, operated by a team of highly skilled and experienced professionals. This powerful combination ensures:



- **Unmatched Efficiency:** Our GPS technology optimizes every step of the process, minimising wasted time and maximising productivity. This translates to faster project completion times and cost savings for you.
- **Precision Execution:** The advanced technology integrated into our machinery allows for unparalleled accuracy in tasks like excavation, grading, and material placement. This meticulous approach ensures exceptional results that meet your exact specifications.
- **Reduced Risk:** Our commitment to proper equipment maintenance and operator training minimises the risk of delays or accidents on the job site. This translates to a safer working environment and peace of mind for everyone involved.
- **Confidently Tackling Any Challenge:** With the right tools and the expertise to wield them, our team is prepared to handle any project, big or small. No matter the complexity, we have the resources and know-how to deliver exceptional results.



Expertise – Civil Construction & Earthworks

Our experienced team offers a comprehensive range of services to tackle any project, big or small, including:

- **Bulk Earthworks:** We handle large-scale excavation and movement of soil, laying the foundation for your project.
- **Detailed Excavation:** We meticulously dig and prepare the precise areas needed for your project, ensuring a perfect fit.
- **Environmental Remediation:** We safely remove and dispose of any contaminated soil or materials, ensuring a clean and healthy environment.
- **Subgrade Rectification:** We assess and improve the underlying soil conditions to create a stable base for construction.
- **Road & Carpark Construction:** We build new or repair existing roads and carparks, keeping your community connected.
- **Hard & Soft Landscaping:** We design and install beautiful and functional landscaping features, enhancing the aesthetics and functionality of your space.
- **Drainage Installation:** We create effective drainage systems to manage water flow and prevent flooding.



Plants and Machinery

We recognise that success relies on using the right tools for the job. Therefore, we maintain a comprehensive fleet of state-of-the-art, GPS-equipped machinery to handle any project with efficiency and precision, including:

- **Excavators (8-50 Ton):** From nimble 8-ton machines for delicate tasks to powerful 50-ton giants for heavy lifting, our excavators offer the perfect balance of size and strength for any excavation or demolition project.
- **Bulldozers (D6 & D8):** Our D6 and D8 bulldozers are workhorses designed for large-scale earthmoving projects. They excel at clearing land, digging foundations, and creating precise slopes.
- **Rollers (1-20 Ton):** We have a range of rollers, from compact 1-ton models for tight spaces to massive 20-ton machines for expansive surfaces. These ensure optimal compaction of soil and asphalt, creating a solid and stable base for construction.
- **Bobcats:** Our agile Bobcats are ideal for tight spaces, landscaping projects, and intricate material handling tasks. They offer versatility and maneuverability for a variety of applications.
- **Breakers:** We have a selection of hydraulic breakers for tough demolition jobs. These powerful attachments can break through concrete, asphalt, and rock, making way for new construction.
- **Loaders:** Our powerful loaders come in various sizes to meet project needs. They excel at loading and transporting materials quickly and efficiently, keeping your project on schedule.

Certifications and Compliance

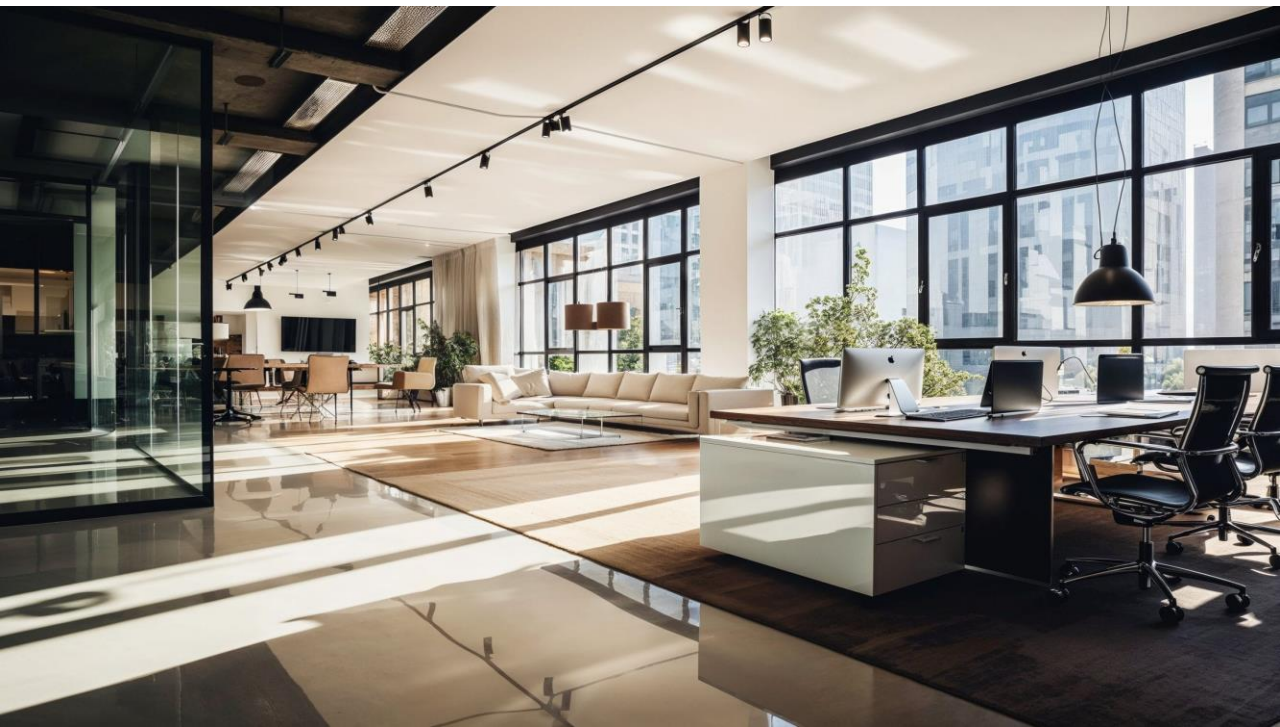
At Native Roots Aus, we're committed to exceeding expectations and delivering exceptional results. That's why we've achieved certifications in three key ISO standards:

- **ISO 9001:2015 – Quality Management:** This rigorous certification demonstrates our commitment to consistent quality across all aspects of our business. It ensures we have well-defined processes, rigorous quality control procedures, and a continuous improvement mindset. This translates to projects completed to the highest standards, meeting your exact specifications and exceeding your expectations.
- **ISO 14001:2015 – Environmental Management:** We understand the importance of environmental responsibility. This certification signifies our commitment to minimizing our environmental impact through sustainable practices. We prioritize the use of eco-friendly materials, responsible waste management, and energy-efficient operations. By choosing us, you're partnering with a company that cares about the environment, just as much as you do.
- **ISO 45001:2018 – Occupational Health and Safety (OH&S) Management:** The safety of our team members and the communities we work in is paramount. This certification highlights our dedication to creating a safe work environment. We implement comprehensive safety protocols, provide ongoing training for our staff, and prioritize risk mitigation strategies. This ensures a secure workplace and peace of mind for everyone involved.

These ISO certifications are not just badges of honor; they represent our core values and unwavering commitment to excellence in everything we do. By partnering with us, you can be confident you're choosing a reliable, environmentally responsible, and safety-focused company that delivers exceptional results.



Contact Details



Have a question or ready to discuss your project? We're here to help! Feel free to reach out to us by phone, email or LinkedIn. Our friendly and knowledgeable team is eager to hear from you and will respond promptly to your inquiry. We look forward to collaborating with you!

Email: Operations@nativerootsaus.com.au

Phone: +61 415 496 863

LinkedIn: [Native Roots Aus](#)